

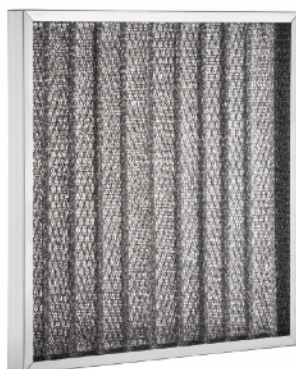
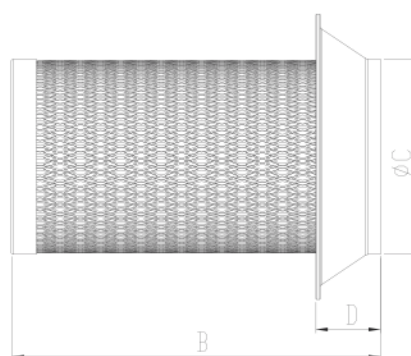
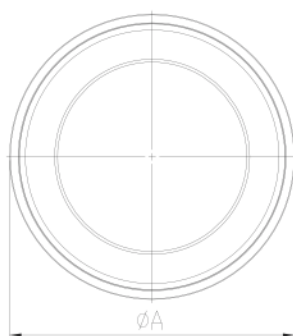
## BYF

### OIL FILTER

In case BDTX series products are used in oily and extremely dirty environments, BYF oil trap filters must be used. These filters retain the oil and particles that can damage the motor due to their oil-retaining properties, thereby adhering to the

propeller and aggravating it and preventing it from balancing over time. The BYF filters are designed to be easily installed in the duct. In case BDTX fans are used in oily and dirty environments, BYF filter extends service life.

TYPE	A	B	C	D	E
BYF 200	135	195	270	335	20
BYF 250	130	245	270	335	20
BYF 315	165	290	280	345	20



## BFG2

### METALLIC FILTER

Washable metal filters for high oil and dust holding capacity It has. They can also work in extremely humid environments and high temperatures.

- Air filtration in corrosive environments;  
 - For grease and sparks, for separating oil vapors  
 They are used.

TYPE	DIMENSIONS		FILTER SURFACE	AIR FLOW	PRESSURE
	A	B	m <sup>2</sup>	m <sup>3</sup> /h	(Pa)
BFG2-1	278	287	0,14	1040	60
BFG2-2	287	592	0,29	2120	60
BFG2-3	592	592	0,60	4360	60

Dimensions are in (mm). Sound Level Measured from 3m distance in room condition.

