



BHV-P

CABINET FANS / METALIC FILTER / Backward Curved - Plug

Fan Components and Material Properties

BHV-P single suction plug fan is made of steel sheet with electrostatic paint against corrosion. 25 mm stone wool was placed between the panels. Carcass structure is made of aluminum profile. Suitable for operation at high temperatures when the motor is out of airflow.

Fan Structure

Fan blades are produced in aerodynamic structure to provide backward curved and regular flow. It is fan welded and electrostatic powder coated.

Benefits

It responds to performance and efficiency with high flow rate and pressure channel systems. The stiff body allows the fan rotor to rotate at high speeds to achieve the desired pressure and flow rates. It prevents the accumulation of foreign materials such as dust and dirt on its sparsely wings.

They provide maximum efficiency with low energy. It is acoustically insulated against sound and it has the feature of vibration-free operation. Thanks to the service cover in the construction, it provides easy intervention to maintenance and faults. It is suitable for use in oily environments due to its standard metal filter.

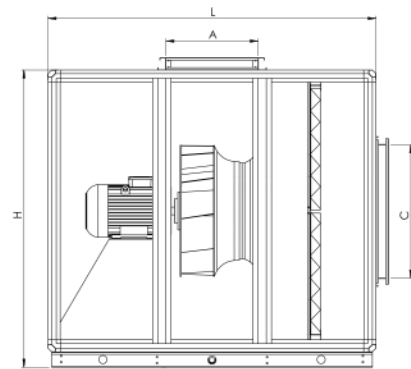
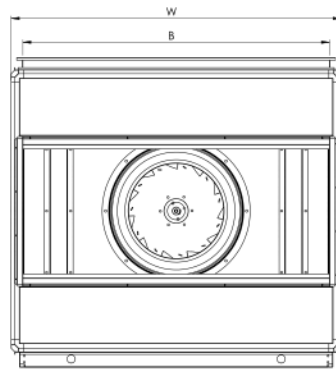
Speed Control

Optional control devices can be provided. Speed control can be done with frequency inverter in 3~ phase products. (see BSC-F accessory)

Usage Areas

It is used for exhausting dirty air with fine particulate powders or high oil mist concentration due to its sloped sparse blades. It is used as an fan in ducted systems with high pressure losses.

Technical Drawing and Tables

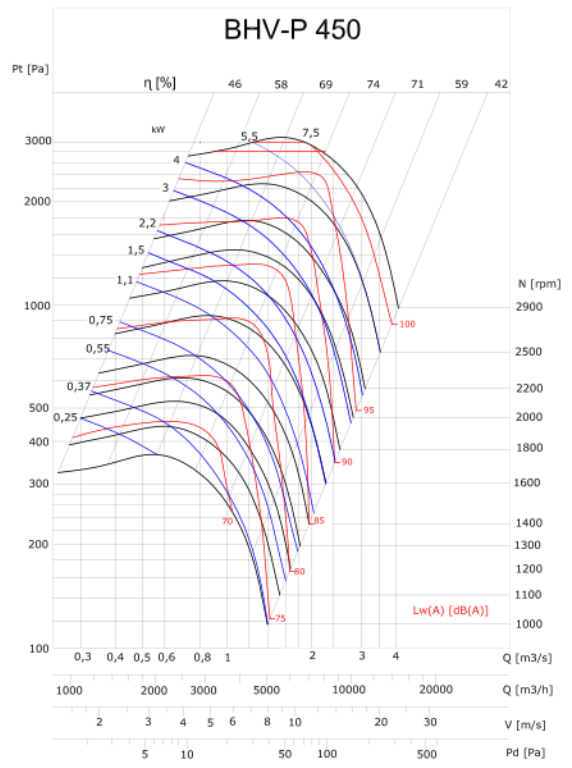
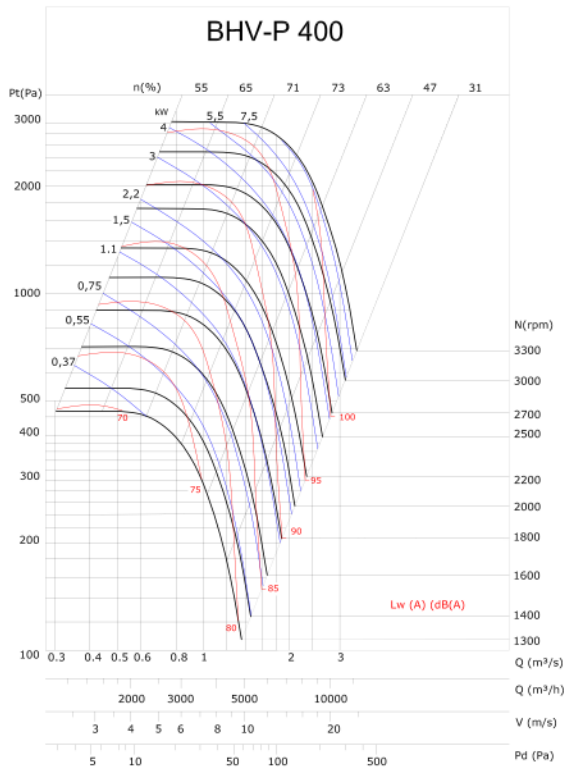
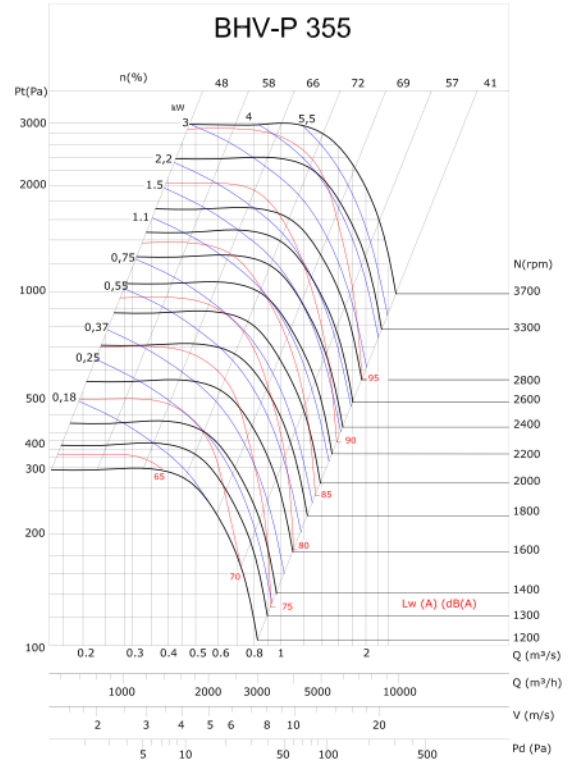
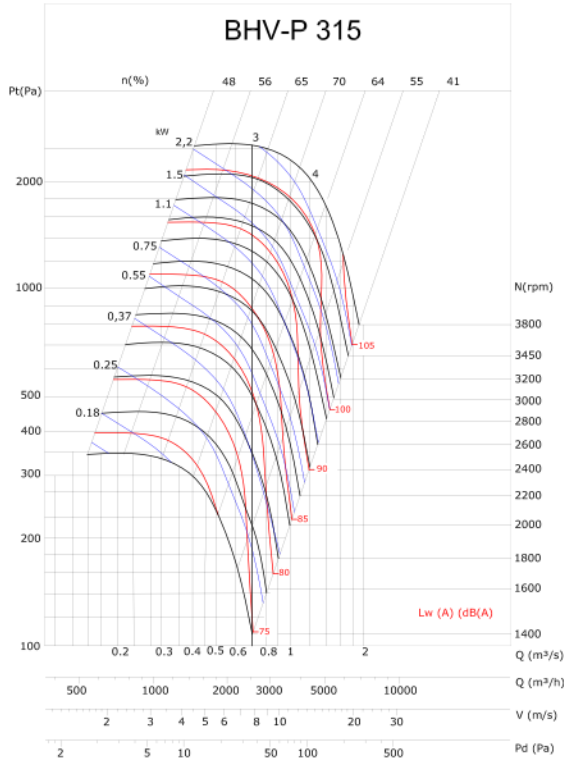


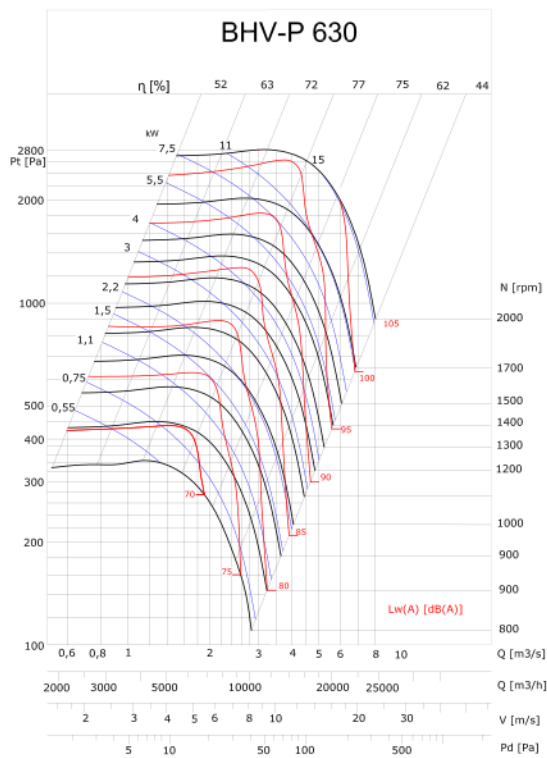
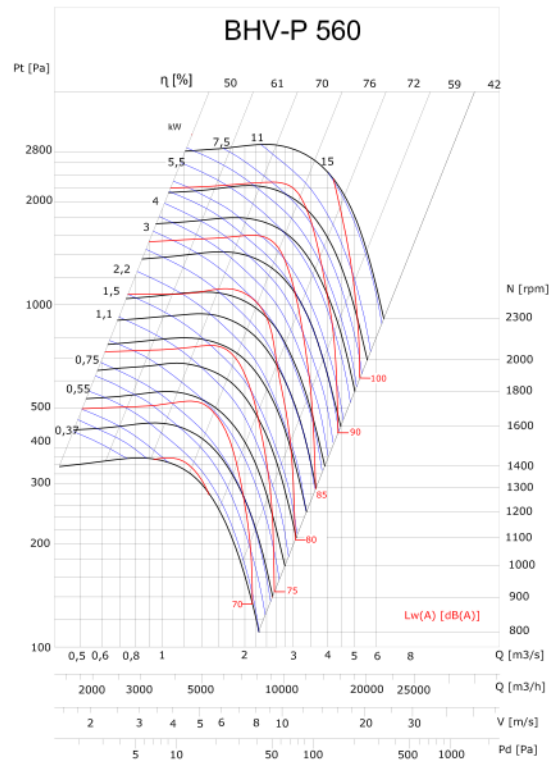
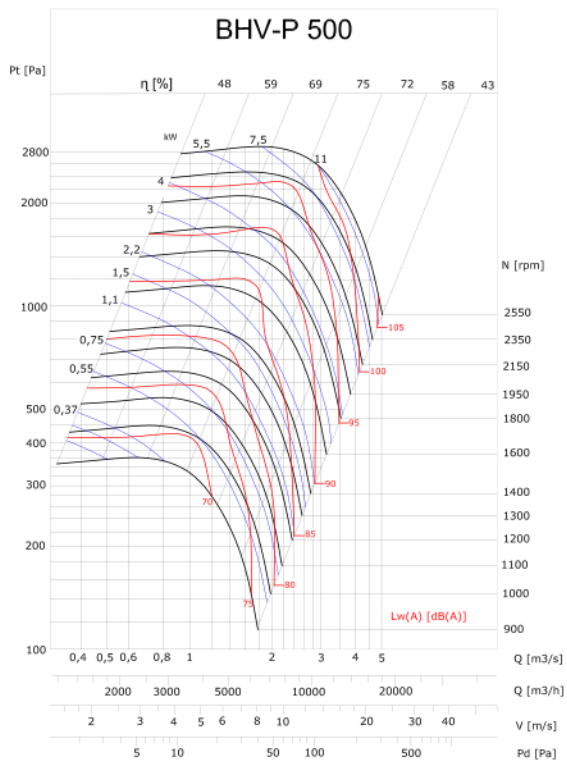
TYPE	H	W	L	A	B	C	D
BHV-P 315	600	600	900	270	515	270	515
BHV-P 355	700	700	900	270	615	270	615
BHV-P 400	800	800	1000	310	715	310	715
BHV-P 450	900	900	1100	335	815	335	815
BHV-P 500	1000	1000	1140	365	915	365	915
BHV-P 560	1100	1100	1240	410	1015	410	1115
BHV-P 630	1200	1200	1440	430	1115	430	1115

Dimensions are in (mm)

TYPE	VOLTAGE	FREQUENCY	POWER	MOTOR SPEED	AIR FLOW	EXTERNAL PRESSURE LOSS
	V	Hz	kW	r.p.m	m ³ /h	Pa
BHV-P 315-0,37/4	230-380	50	0,37	1450	2600	100
BHV-P 315-1,5/2	230-380	50	1,5	2800	5000	400
BHV-P 355-0,55/4	230-380	50	0,55	1450	3400	100
BHV-P 355-3/2	380	50	3	2800	7500	500
BHV-P 400-0,75/4	230-380	50	0,75	1450	6000	100
BHV-P 400-5,5/2	230-380	50	5,5	2800	11000	500
BHV-P 450-1,1/4	230-380	50	1,1	1450	8000	200
BHV-P 450-7,5/2	380	50	7,5	2800	15000	600
BHV-P 500-3/4	380	50	3	1450	11000	200
BHV-P 560-4/4	380	50	4	1450	15000	250
BHV-P 630-5,5/4	380	50	5,5	1450	21000	300

Sound Level Measured from 3m distance in room condition.





Accessories

