

规格书 SPECIFICATION

风机型号 FAN MODEL **B3P225-EC072-008**

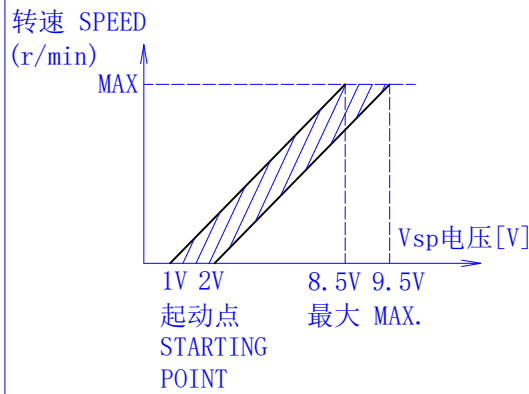
1. 适用范围 SCOPE

本电动机规格书适用于3相直流无刷电动机的技术规定
其中没有特别指明处均遵从中国国家强制性产品认证和CE认证，且满足欧盟ErP要求
THIS SPECIFICATION IS SPECIFIED FOR 3-PHASE DC BRUSHLESS MOTOR.
ITEMS EXCEPT HAVING INDICATED IN THE SPECIFICATION, ARE APPLIED TO CHINA COMPULSORY PRODUCT CERTIFICATION AND CE, AND TO MEET THE EU ErP REQUIREMENTS.

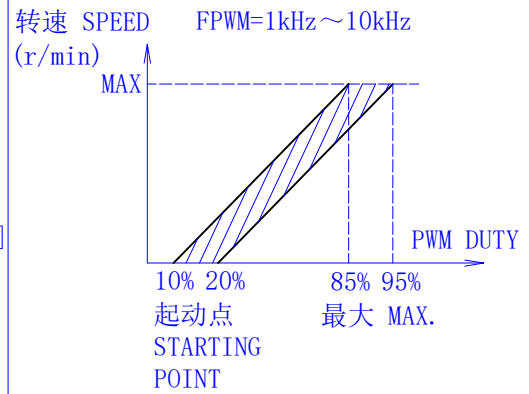
2. 规格 SPECIFICATIONS

项目 ITEM	内容 SPECIFICATION		备注 DESCRIPTION
电气特性 ELECTRICAL CHARACTERISTICS	电压 VOLTAGE	AC220 [V]	范围: AC200-277V \triangle RANGE
	频率 FREQUENCY	50/60 [Hz]	
	转速 SPEED	3000 \pm 10% [r/min]	
	功率 POWER	170 \pm 16% [W]	
	电流 CURRENT	1.16 \pm 16% [A]	
	最大风量 AIR FLOW	1465 MAX. [m ³ /h]	
	噪音 NOISE	79 MAX. [dBA]	
	泄漏电流 LEAKAGE CURRENT	3.5 MAX. [mA]	测试条件 AC260V 3S TESTING CONDITIONS
	绝缘耐压 DIELECTRIC RESISTANCE	AC1800V	1S 跳闸电流10mA TRIPPING CURRENT
	绝缘等级 INSULATION CLASS	B 级 CLASS	
	控制方式 CONTROL INPUT	0-10V Vdc/PWM	见图一、二 SEE FIG. 1、2
	输出电源 OUTPUT	+10Vdc	
	转速信号 TACH OUTPUT	1 PULSE/R	占空比DUTY 30%~70%须在+10V与TACH OUTPUT间连接10K Ω 上拉电阻/IT NEEDS 10K Ω PULL-UP RESISTANCE BETWEEN +10V LINE AND TACH OUTPUT LINE
	保护方式 : PROTECTED MODE	OVER-TEMPERATURE/OVER-CURRENT/LOCKED PROTECTED	

RoHS指令对应 CONFORM TO RoHS INSTRUCTIONS	角度公差 Angle Tolerance		夹角短边的长度范围(unit mm) Classification of a shorter side of subjected angle				普通公差 General Tolerance	尺寸范围 (unit mm) Classification of basic dimension					
	公差Tolerance		X \leq 10	10<X \leq 50	50<X \leq 120	120<X \leq 400		X \leq 6	6<X \leq 30	30<X \leq 120	120<X \leq 400		
03 '23-02-14	EC-AFL-2023-0028												
02 '21-10-16	EC-AFL-2021-0101		参数变更		JSOT32	材 质 MATERIAL	B3P225-EC072-008						
00 '21-03-16			6/6页 端盖高度变		JSOG01								
改版 SYM	年 月 日 DATE	图面变更号 REVISION NO.	变 更 事 项 REVISIONS		设计 BY	表面处理 FINISH	风机/电机型号 MODEL						
制 图 DRAWN	设 计 DESIGNED	检 图 CHECKED	检 印 CHECKED	比 例 SCALE	FREE	品 名 TITLE	规格书 SPECIFICATION						
艾弗洛 '23-02-14 JSOT32	艾弗洛 '23-02-14 JSOT32	艾弗洛 '23-02-14 JSOG01	艾弗洛 '23-02-14 JSOG01	三角法 THIRD ANGLE PROJECTION		图 号 DWG. NO.	A112-0665-03						
艾弗洛 AFL							页 SHEET	1/6					



图一 FIG. 1



图二 FIG. 2

外观 APPEARANCE

不能有影响商品质量的伤痕和污迹
THERE SHOULD NOT BE ANY DEFECTS AND DIRTY WHICH
SPOIL GOODS VALUE

质量 MASS

约 APPROX 2.8 [Kg]

机械特性
MECHANICAL
SPECIFICATION电机引线引拔强度
LEAD WIRE PULLED
OUT STRENGTH

20 [N/根]以上 MIN.

寿命 L10
LIFE

40000 [h] MIN.

3. 环境要求 ENVIRONMENTAL REQUIREMENT

保存温度 STORAGE TEMPERATURE RANGE	-25~60 [°C]	
使用·保存湿度 OPERATING, STORAGE HUMIDITY	30~95 [%]RH	无结露 NON CONDENSING
使用温度范围 OPERATING TEMPERATURE RANGE	-20~60 [°C]	

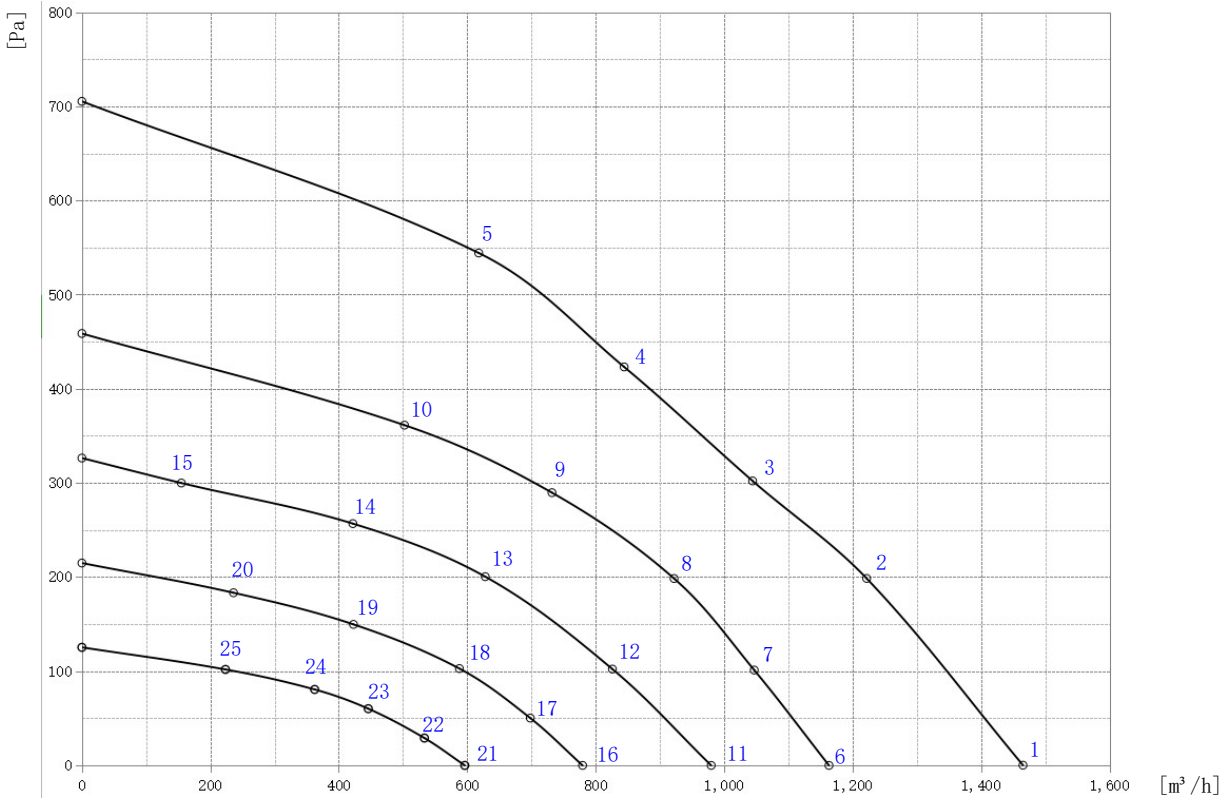
4. 使用注意事项 NOTE IN USE

- | | |
|---|--|
| A | (1) 本电机内未设接线反接等保护线路
SINCE THIS MOTOR HAS NO REVERSING CONNECTION |
| | (2) 启动时电流过大会损坏电机 请防止电流峰值超过2.5A
TO PREVENT MOTOR DAMAGED BY OVER STARTING CURRENT, THE PEAK CURRENT CAN NOT EXCEED 2.5A |
| | (3) 风机运转时不可插拔风机引线插头
PLEASE DO NOT PERFORM EXTRACTION AND INSERTION OF THE CONNECTOR UNDER REVOLUTION
IRRESPECTIVE OF POWER ON AND POWER OFF |
| | (4) 本风机通风冷却 使用时请考虑风机周边的通风条件
FAN CAN BE COOLED BY VENTILATION, PLEASE CONSIDER VENTILATED CONDITION AROUND THE
FAN WHEN USING IT |
| | (5) 轴承部不可受到冲击
DO NOT ADD SHOCK TO THE BALL BEARING |
| | (6) 拿取风机时不可拎风机引线 引线过度受力时内部焊接部分可能脱落
DO NOT CARRY WITH LEAD WIRES WHEN HANDLE A FAN, IF ADD HUGE STRENGTH TO LEAD WIRES
THAT THE SOLDERED PART IN FAN MAY BE SHED |
| B | (7) 按本规格书中的规格评价风机 若工作点规格需要变更 请与本公司联系
EVALUATE THE FAN REFER TO THIS SPECIFICATIONS. IF THE LOAD OR POWER SUPPLY VOLTAGE
OF THE MOTOR SHOULD BE CHANGED, PLEASE CONTACT WITH US |

5. 其它 OTHERS

- | | |
|---|--|
| C | (1) 本款风机的知识产权属于本公司 在本款风机的使用上不会发生专利问题 应用本风机形成有关产品
或方法及新的技术方案造成专利侵权 本公司不予保证 请贵公司特别注意
THE INTELLECTUAL ASSET OF THE FAN IN THE FORM OF PATENT BELONGS TO OUR CORPORATION
SO ANY PATENT PROBLEM WILL NOT BE CAUSED DURING THE ACTUAL APPLICATION. OUR CORPORATION
WILL NOT BE RESPONSIBLE FOR ANY PATENT DISPUTE OR PROBLEM THAT CAUSED BY THE PRODUCT
METHOD AND NEW TECHNIQUE PROJECT WHICH ARE DEVELOPED BY USING THIS FAN |
| | (2) 贵公司保证未经本公司许可 不得将此技术规格书泄漏给其它任何第三方
IT SHOULD BE ASSURED THAT THIS SPECIFICATION CAN NOT BE REVEALED TO ANY THIRD PARTY
WITHOUT THE CONSENT OF OUR CORPORATION |
| | (3) 本电机Pb Cr(VI+) Cd Hg PBB PBDE 6种物质的含有量满足RoHS指令(2002/95/EC)的要求
MATERIALS OF MOTOR CONTAIN SIX SUBSTANCES Pb Cr(VI+) Cd Hg PBB AND PBDE, THOSE CONTENTS
COMPLY WITH THE RoHS INSTRUCTION |

6. P-Q曲线图 P-Q CURVES



项目 ITEM	电压 VOLTAGE	频率 FREQUENC y	转速 SPEED	功率 POWER	电流 CURRENT	风量 AIRFLOW	静压 PRESSURE	V _{sp}	项目 ITEM	电压 VOLTAGE	频率 FREQUENC y	转速 SPEED	功率 POWER	电流 CURRENT	风量 AIRFLOW	静压 PRESSURE	V _{sp}	
单位 UNIT	[V]	[Hz]	[r/min]	[W]	[A]	[m³/h]	[Pa]	[V]	单位 UNIT	[V]	[Hz]	[r/min]	[W]	[A]	[m³/h]	[Pa]	[V]	
1	220	50	2997	189	1.37	1465	0	10V	16	220	50	1633	34	0.29	780	0	5V	
2	220	50	2937	200	1.45	1222	199		17	220	50	1636	38	0.32	698	50		
3	220	50	2835	194	1.41	1044	302		18	220	50	1632	40	0.34	588	103		
4	220	50	2872	196	1.42	844	423		19	220	50	1632	39	0.33	423	150		
5	220	50	2967	203	1.46	618	544		20	220	50	1633	34	0.30	236	183		
6	220	50	2390	97	0.74	1163	0	7V	21	220	50	1243	17	0.17	596	0	4V	
7	220	50	2401	110	0.83	1047	101		22	220	50	1246	19	0.18	533	29		
8	220	50	2401	119	0.89	922	198		23	220	50	1246	18	0.18	446	60		
9	220	50	2401	118	0.89	732	290		24	220	50	1246	20	0.19	362	60		
10	220	50	2400	110	0.84	502	361		25	220	50	1243	18	0.18	224	81		
11	220	50	2031	60	0.49	980	0	6V	-	-	-	-	-	-	-	-	-	
12	220	50	2025	70	0.56	826	102		-	-	-	-	-	-	-	-		-
13	220	50	2026	72	0.57	628	200		-	-	-	-	-	-	-	-		-
14	220	50	2026	67	0.54	422	257		-	-	-	-	-	-	-	-		-
15	220	50	2026	50	0.42	155	300		-	-	-	-	-	-	-	-		-

7. 控制方式及应用

NOTES ON VARIOUS CONTROL POSSIBILITIES AND THEIR APPLICATIONS

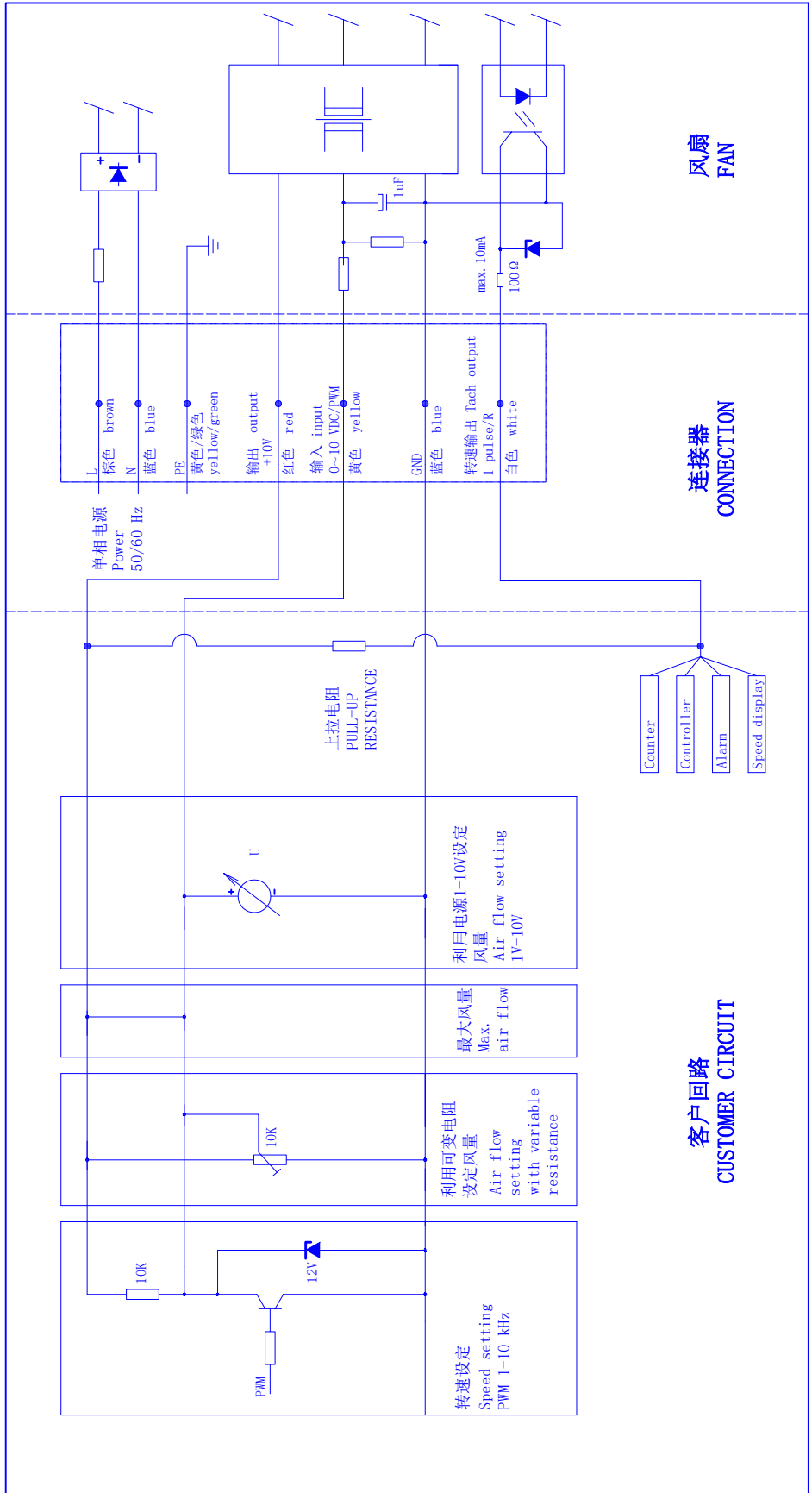
A

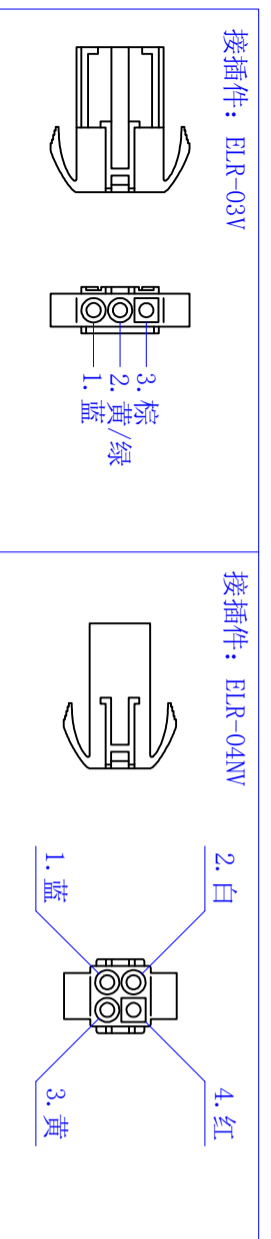
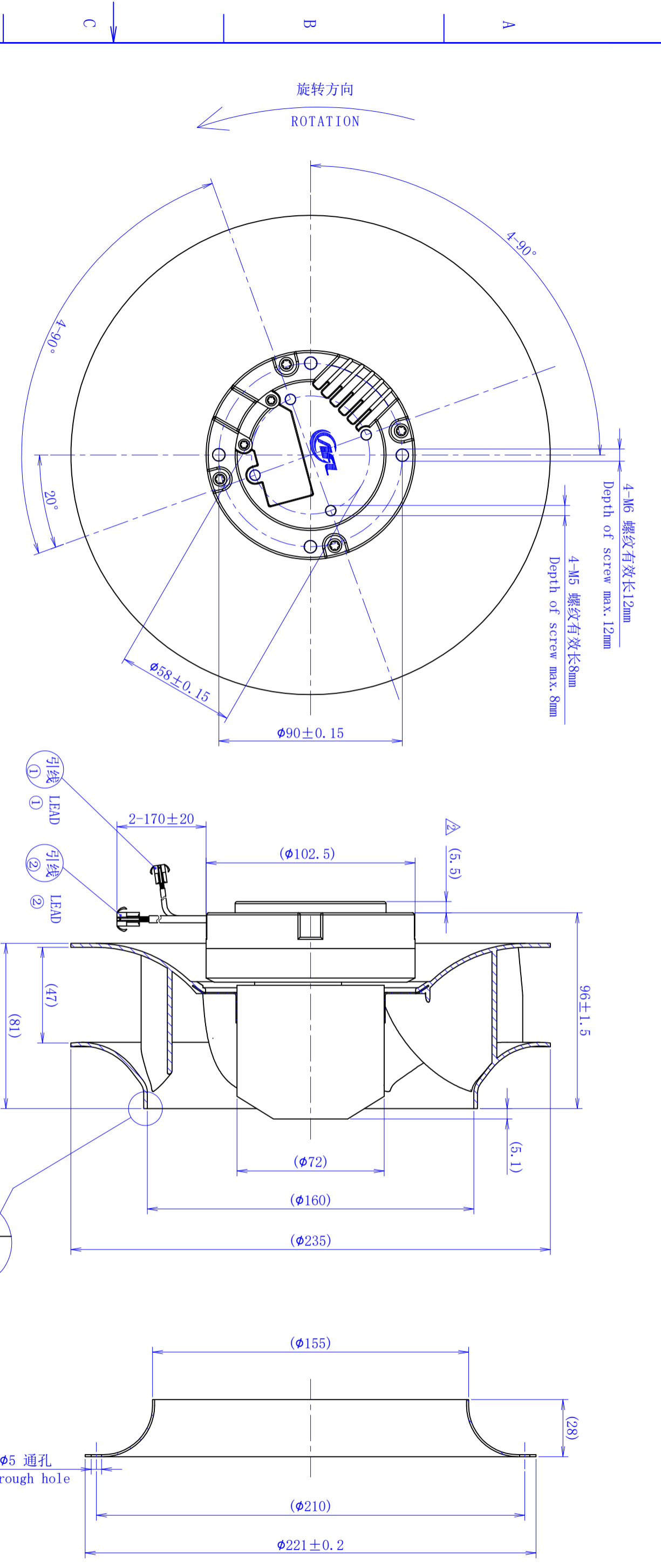
B

C

D

E





【引线①式样】
【LEAD WIRES ASS'Y ①】

电线 WIRES: 3*AWG20
接插件: ELR-03V

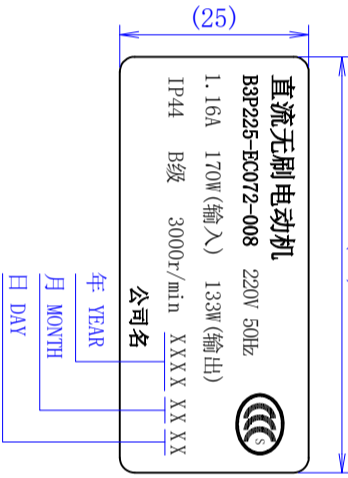
【引线②式样】
【LEAD WIRES ASS'Y ②】

电线 WIRES: 4*AWG22
接插件: ELR-04NV

PIN.	信号名 SIGNAL	颜色 COLOR	规格 SPEC
1	N	蓝 BLUE	AC220V/50Hz
2	PE	黄/绿 YELLOW/GREEN	接地 EARTH
3	L	棕 BROWN	AC220V/50Hz

PIN.	信号名 SIGNAL	颜色 COLOR	规格 SPEC
1	GND	蓝 BLUE	GND
2	FG	白 WHITE	1 Pulse/R
3	Vsp	黄 YELLOW	0-10VDC/PWM
4	Vcc	红 RED	DC10V输出

【铭牌一内容】 (55)



【铭牌二内容】 (55)

